

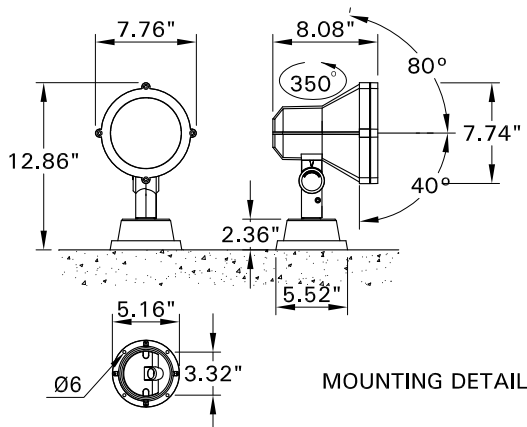
INSTALLATION AND SERVICE MANUAL



For installation of Mic 3 Medium floodlight symmetrical luminaire.
Model. UMI-50091-50092, UMI-50102-50108.

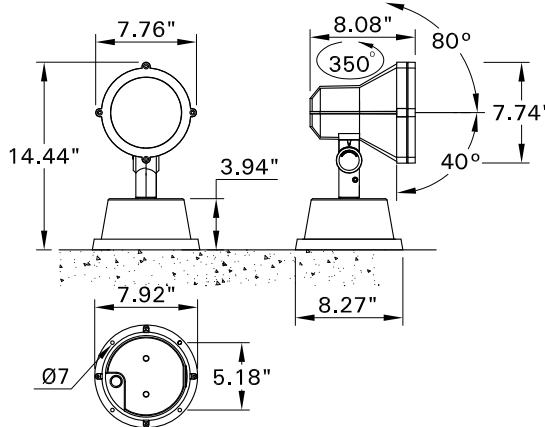
Product drawing (dimensions)

SUITABLE FOR WET LOCATIONS

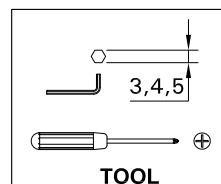


MOUNTING DETAIL

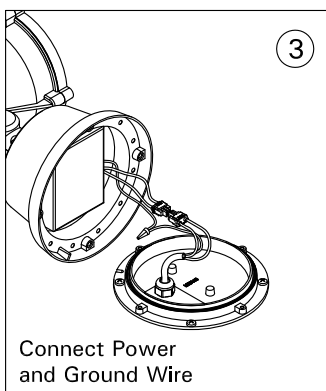
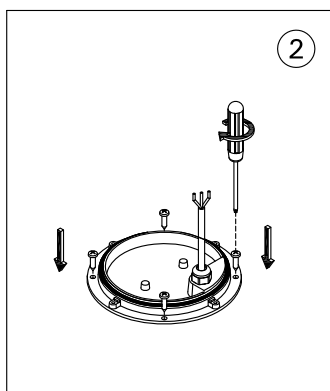
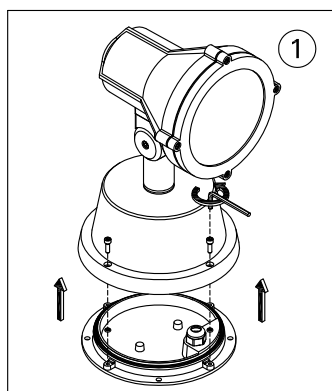
UMI-50091 - UMI-50092



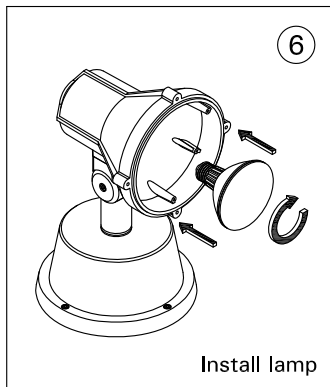
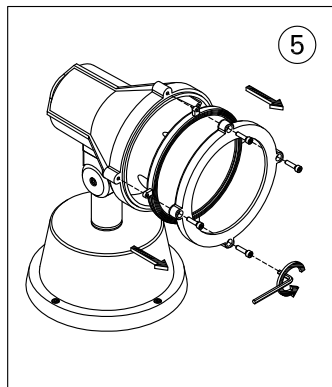
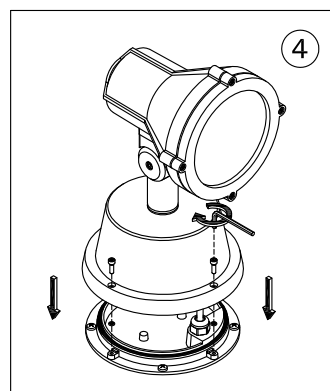
UMI-50105 - UMI-50108



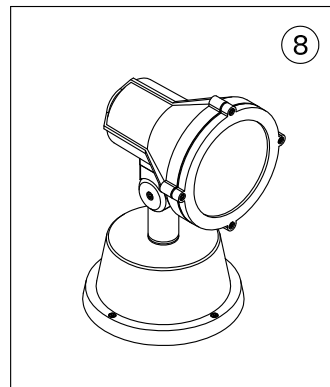
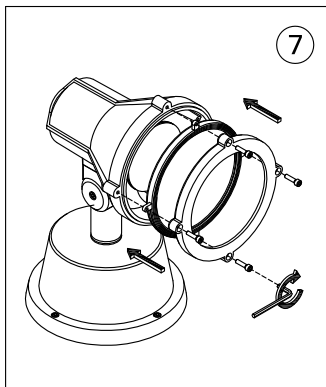
TOOL



Connect Power and Ground Wire



Install lamp



Notice to installer :

- 1.WIRING INSTRUCTIONS** Warning : RISK OF FIRE AND ELECTRICAL SHOCK. : FIXTURE MUST BE INSTALLED BY A QUALIFIED ELECTRICIAN ONLY>FIXTURE IS INTENDED FOR INSTALLATION IN ACCORDANCE WITH THE NATIONAL ELECTRICAL CODE, LOCAL AND FEDERAL CODE SPECIFICATIONS. DISCONNECT POWER BEFORE SERVICING.
- 2.This fixture has a VOLTAGE SPECIFIC BALLAST,Check that the supply voltage is the same as the installed ballast voltage.**

Ligman Lighting USA

7144 NW Progress Court, Hillsboro
Oregon, 97124, USA
Tel : 503 645 0500 | Fax : 503 645 8100

www.ligmanlightingusa.com

UMI-50091 12/10/13 REV.0
1/1



FM-TS-13/25-05-2007-REV.2